

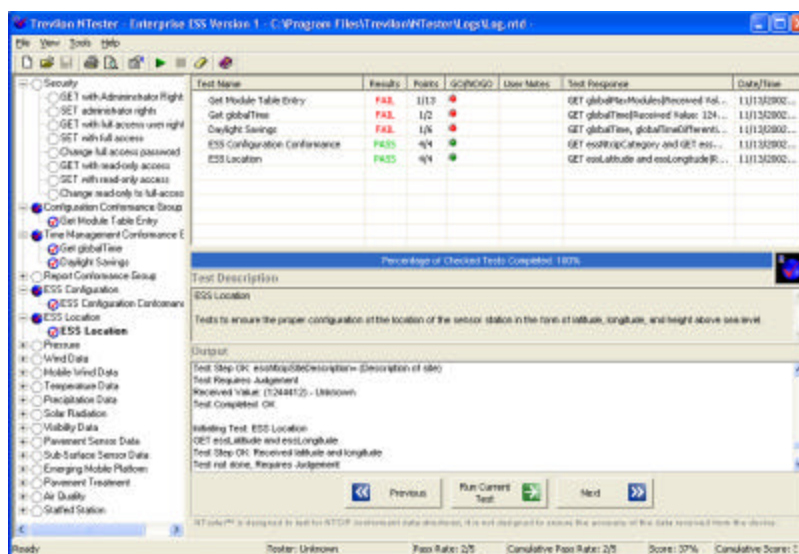
## Free NTCIP Conformance Tester

Introducing Trevilon NTester™, an NTCIP conformance tester for Dynamic Message Signs (DMS), road weather stations (also known as Environmental Sensor Stations or ESS), and CCTV camera control through a cooperative effort with ENTERPRISE, I-95 Corridor Coalition, and the Federal Highway Administration. NTester is available for free download at <http://www.trevilon.com>. NTester automates and simplifies conformance testing using ENTERPRISE test procedures and is an indispensable tool for ITS product developers, system integrators and troubleshooters. NTester has a simple interface that allows an individual unfamiliar with NTCIP to test devices, yet it is robust enough to perform rigorous testing in a repeatable fashion.

The interface is designed to present information in an uncluttered, graphical format divided into three distinctive panes. First, the test selection pane (left) allows you to select the tests you wish to run. Secondly, the test results pane (top right), presents the results of the tests. Finally, the test description pane (bottom right) displays detailed information about the tests' status.

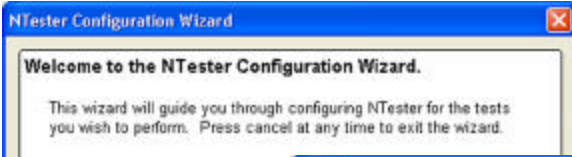
### Product Highlights

- ✓ Support for DMS, ESS, CCTV, and Global Object test procedures
- ✓ Communications available via Serial, Ethernet and Dial-up connections
- ✓ Interview-style wizard makes customizing conformance tests straightforward and easy
- ✓ The Expression Builder translates complex variables into NTCIP values
- ✓ Test results are viewable in a user-friendly format
- ✓ Results can be printed in a report format
- ✓ Runs on Microsoft® Windows® 95/98/2000/ME/NT/XP
- ✓ Available for free download at: <http://www.trevilon.com>

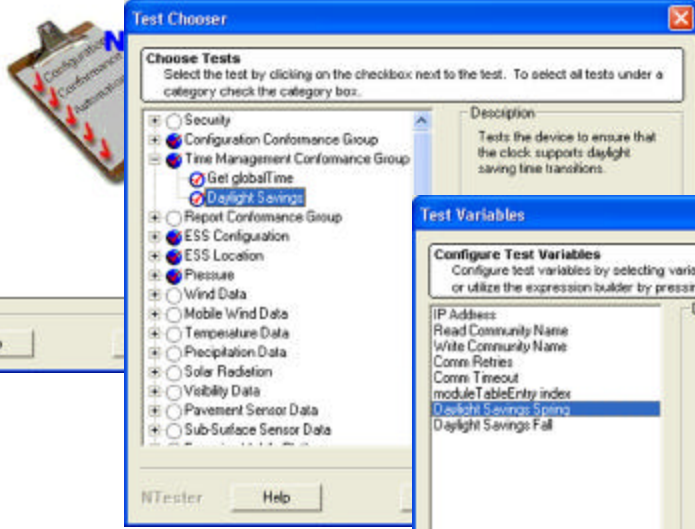


NTester guides you through NTCIP testing by stepping through an interview style wizard to configure the conformance test. Results of the test are then provided in three easy to understand measures: 1) number of tests passed versus total performed, 2) number of test points earned out of total possible points -- allowing for 'partial-credit' on tests, and 3) a go/no-go system that highlights any critical failures.

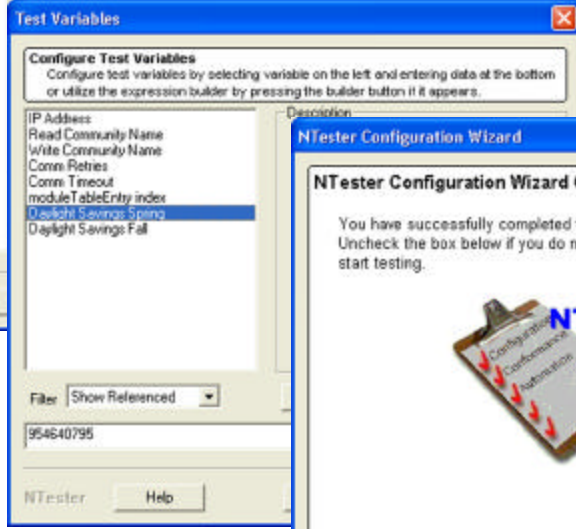
Trevilon is an industry leader in Intelligent Transportation Systems (ITS) and is nationally recognized for NTCIP conformance testing, systems design, and Independent Verification and Validation (IV&V) of systems. The ENTERPRISE Program is a pooled-fund study with member agencies from North America and Europe. Its main purpose is to use the pooled resources of its members, private sector partners and the United States federal government to develop, evaluate and deploy Intelligent Transportation Systems.



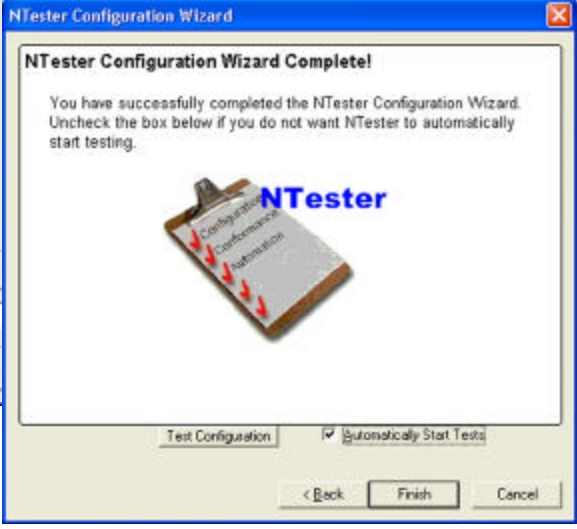
NTTester's most powerful feature is the Configuration Wizard, which allows you to quickly and easily customize robust NTCIP tests.



As you step through the wizard, you will be prompted to select which tests you would like to run. A description of the test will appear on the right to help you determine which tests to select.



The Test Variables step makes configuring test variables a snap! Simply type in the values you need or use the handy Expression Builder for selected variables. Use the Filter to more easily view the appropriate variables for your tests.



In just a few steps, your tests are ready to run!

**NTTester Data Sheet**

**Communications Specifications Supported Protocols**

- NTCIP Sublevel:
- NTCIP 2101 SP-PMPP/RS232
  - NTCIP 2103 SP-PPP/RS232
  - NTCIP 2104 SP-Ethernet
- NTCIP Transport Level:
- NTCIP 2201 TP-Transportation Transport (Null)
  - NTCIP 2202 TP-Internet (UDP/IP and TCP/IP)
- NTCIP Application Level:
- NTCIP 2301 AP-STMF (Level 1 - SNMP only)
- NTCIP Information Level:
- NTCIP 1201 Global Objects
  - NTCIP 1203 DMS Objects
  - NTCIP 1204 ESS Objects
  - NTCIP 1205 CCTV Camera Control Objects

**Hardware Specifications**

Operating System	Windows XP, 2000, NT, 98, and 95.
	Microsoft Internet Explorer® (Version 5.0+ )
Machine Requirements	At least 5 MB of disk space and 64 MB RAM.
Modem Adapter	Any Windows compatible modem.
Network Interface	Any Windows compatible network interface.
Data Rates	Dependent upon network or modem adapters.



Information furnished by Trevilon Corporation is believed to be accurate and reliable. However, Trevilon does not warrant the accuracy, completeness, or fitness for use of any of this information furnished. No license is granted by implication or otherwise under any intellectual property. Specifications subject to change without notice.

